

Client installation of ELBA 5.8.1

This documentation will guide you through the client installation of ELBA 5.8.1. This kind of installation should be executed by a user having full access to all local drives.

In addition to this guideline there are other manuals available, such as:

- Update to ELBA 5.8.1 of a client installation
- Technical requirements for a client installation of ELBA 5.8.1

The installation of ELBA covers several steps. In general you can reach the following setup dialogue with the button **<Next>** and the previous setup dialogue with the button **<Previous>**. With the button **<Cancel>** you can abandon the setup at any step. Already created temporary files will then be deleted and ELBA will not be installed.



For the installation of this program you require the following data:

- Licensing number (optional – depending on bank)
- Communication authorisation and password (can be found in the password document)
- Disposer and PIN (can be found in the PIN document)
- Access data to the bank server (can be found in the password document)

Start setup

Close all other Windows applications before starting the setup. Please download the setup file from the website <http://www.elba.at/ELBA581>.

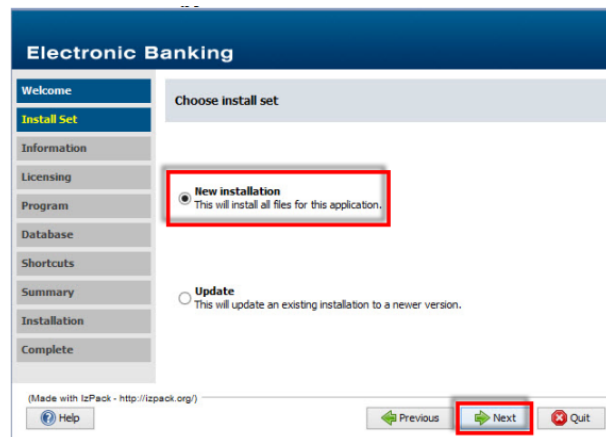


Before starting the setup, please make sure that your licensing bank already supports ELBA 5.8.1. The following link shows you all banks and the supported ELBA versions: <http://www.elba.at/elba5>

Start the installation by double-clicking on the adequate setup file. The installation is being prepared. Select the language version you want to install (German or English) and confirm with **<OK>**.

Click on the button **<Next>** to confirm the dialogue “Welcome”. The button “Help” (bottom left corner) provides you with detailed answers to any step of the installation.

Choose your install set. Select „New installation“ and confirm with **<Next>**.



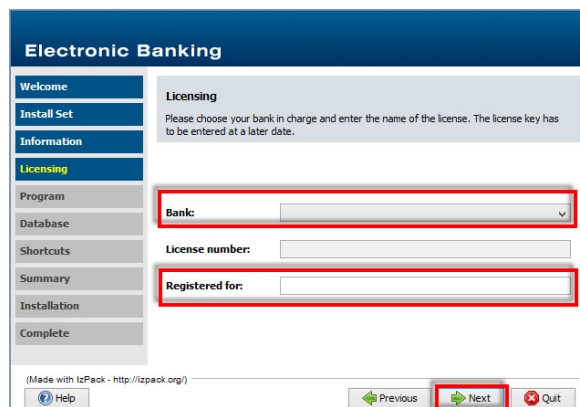
General information to a new installation are displayed in the following dialogue. Read this information carefully and confirm with **<Next>**.

Accept the information about the program update and confirm with **<Next>**.

Select the „licensing bank“ from the box „Bank“.

According to your selection the first part of the licensing number is given. The rest needs to be added at a later time.

Change to the field “Registered for”: with the tabulator key, record your (firm’s) name and confirm with **<Next>**.



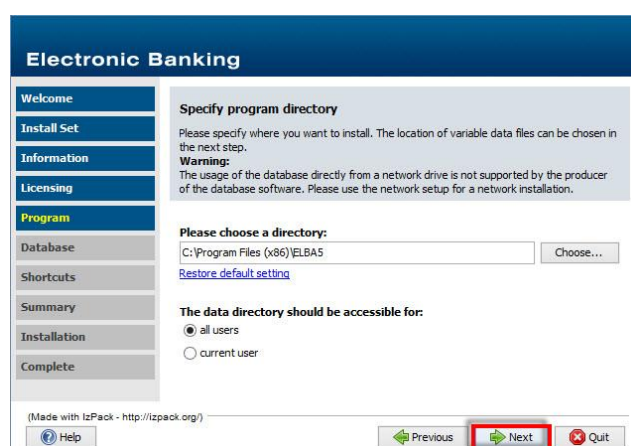
Enter the direction in which you wish to install the program.

The program directory is proposed by default. If you wish to define another directory enter the desired path or call up the **<Choose...>** button.

Please make sure, that the installation path does not contain umlauts or special characters!

By default, the data directory is given “for all users”. If this directory is only valid for the “logged in user”, please activate the respective radio button.

Continue with **<Next>**.



Depending on the selection for the program directory, the directions for datafiles and database are now displayed. Analogously to the program directory you can change the default directories manually or by clicking **<Choose...>**. Confirm with **<Next>**.



ATTENTION: On selection of network drives, the manufacturer of the database does not take any guarantee for proper functioning. In case of network installations, please use the network setup. For no reasons, install the program data locally and the database or the other Electronic Banking data on the server!

At this step you define where the shortcut to the program is to be filed on your computer. Activate the radio button at the desired position. Then click on **<Next>**.

Before the actual installation procedure, your details will again be displayed in a summary. Click on **<Next>** to start the installation.

The program will now be installed into the previous given directions. A bar shows the extent of the procedure. Confirm with **<Next>** afterwards the database will be started.

Before ELBA is being started, the installer checks for an automated update to make sure you will be provided with the latest condition of the application. Confirm with **<OK>**.

Now default transfer settings are displayed to ensure the correct download of the update. Accept with **<Start Update>**.

At this step you have to license the software otherwise the program cannot be started. Please select the licensing bank and enter your licence number and your name.

Information to all functions and to the program are now available in the Online Help (shortcut [F1]).

For the first login choose the user „SYSADMIN“ and the password „ELBAW“ (capital letters). Please also get informed about the assistant (Menu >>Settings, Access data, Assistant, Assistant<<) that guides you through all arrangements of your program - for example transfer settings, account or user administration.

Select the button “Restore data backup” if you wish to recover an existing data backup (elbn.ebk).

Enter the directory of the stored data backup.
Confirm with **<Start>**.

If you agree to overwrite the existing database choose **<Start>**.

Storing a data backup

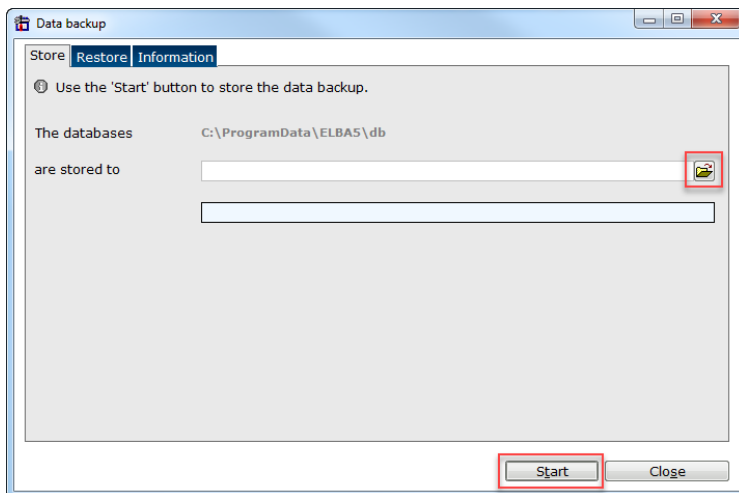
After having arranged all required data with the assistant support, you can individually define how backups should be made in future.



Make sure data backups are made regularly. In case of blackouts, abnormal system end or lightning your database may be damaged, only a data backup can then restore the formerly existing data.

All settings concerning your data backup can be found as follows: Menu >>Programs, Database, Data backup<<

In this new dialogue you have to enter the correct path for your data backup. By default, the “backup” folder in the ELBA5 data directory will be proposed. If this directory does not exist at the very first backup, you can create it in this course. Confirm with **<Start>**.



A successful data backup will be confirmed in the existing window. Click on button **<OK>**.
To end the data backup choose **<Close>**.